



Strengthening
and Inspiring
Science,
Together



START enables science leadership in Africa and Asia through a network of established partners and new collaborators.

Since 1992, START has launched careers in global change science by providing opportunities for training, education, research and networking to early- and mid-career researchers and practitioners.

We build long term relationships with our program participants, creating the basis for sustained networks, partnerships and impacts that continue well after the initial engagements.

Join us and let's work together to strengthen science and inspire solutions to address climate change and other critical sustainability challenges.



Why START?

START works most effectively through partnerships that link science capacity development with solutions. We bring value to partnerships through our deep expertise in capacity development, strong regional connections in Africa and Asia, and a long-term involvement with major global science initiatives.

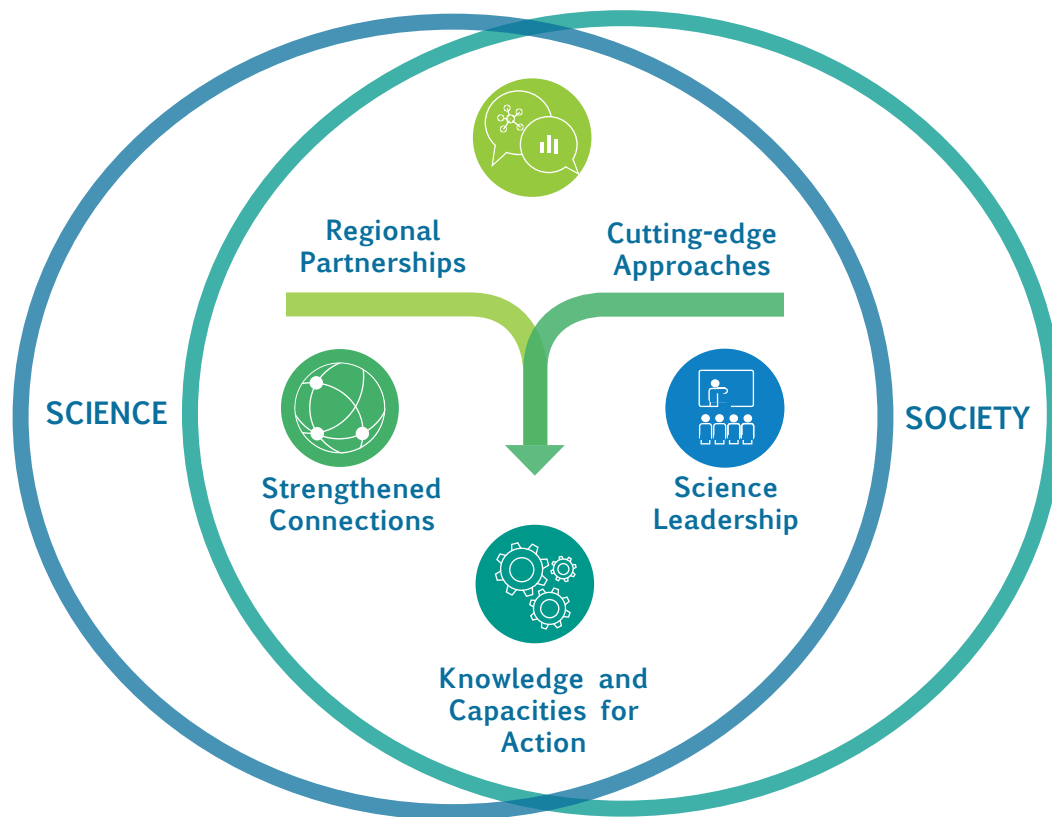
Our partners include the World Climate Research Programme, the UN Environment Programme, the Belmont Forum and Future Earth, as well as universities, research centers and non-governmental organizations.

Across the board — from global to local partners — START is recognized as a lean and flexible organization that has the ability to act effectively and efficiently.

Many of the people who have engaged with START in the past have gone on to become leaders themselves in academia, institutions, or administration. Some have become presidents of universities, others have assumed high level roles in governments, including at ministerial level, some are engaging internationally, notably at the International Science Council, some are working at donor agencies. This “osmosis”, or “permeation”, of START alumni makes me very proud.

- Hassan Virji, START co-founder and former Executive Director

Strengthening scientific capacities for advancing sustainability



START strengthens capacities for global change science by integrating **skill building** and **networking** with opportunities for **experiential learning**. This effort requires a combination of new skills, expanded knowledge, and enhanced connectivity within peer groups, from peers to mentors, and

from regionally based researchers to global research communities. We believe that capacity development outcomes are strongest where efforts to promote connectivity — within and across regions as well as regionally to globally — are linked to experiential learning and skill building.



We accomplish this through:

- Fellowships
- Advanced institutes
- Opportunity grants
- Skill-based training
- Learning forums
- Challenge forums
- Writeshops and writing retreats
- Integrated research and assessments

I would like to express once again my sincerest gratitude to START for not only investing in my own career, but building the capacity of southern countries, and providing opportunities for southern scholars to voice out their experience and insights into global arenas such as the IPCC while contributing not only to climate change science but also policy and practice.

- Juan Pulhin, University of the Philippines

We continuously innovate by:



Bringing together diverse knowledge and perspectives, building transversal skills and increasing impact.



Building bridges between regional to global spheres and advocating for regional priorities within global forums.



Acting as a career launchpad for young researchers, by offering seed funding and opportunities for strengthening skills and confidence.



Developing skills and inspiring leadership

From fellowship programs, to advanced trainings, research and assessments, our programs provide opportunities that strengthen scientific skills and inspire leadership for advancing solutions to critical sustainability challenges.

HIGHLIGHTS FROM A SELECTION OF ACTIVE PROGRAMS

Promoting Gains in Renewable Energy (ProGREEN) in West Africa

Strengthening capacities for action research and dialogue in small-scale renewable energy.



"ProGREEN stands out for its holistic and inclusive approach to analyzing the renewable energy sector. With its retrospective and introspective look at the sector of renewable energies, it will inform both decision-makers and practitioners."

Yvonne Faye, énergie R, Senegal

Future Resilience of African Cities and Lands (FRACTAL)

Advancing local and regional climate change knowledge for informed decision-making.



"African cities are complex, characterized by emergent properties and dynamism. Acknowledging that most modalities of climate services are largely supply driven and rarely begin with the multiplicity of climate sensitive development challenges in these cities, FRACTAL aimed to do things differently from the beginning, focusing first on understanding the decision context and allowing climate information needs to emerge over time."

Alice McClure, University of Cape Town

Global Observation of Forest Cover and Land Dynamics (GOFC-GOLD)

Increasing the capacity of developing countries scientists to access and use satellite data.



"The GOFC-GOLD Data Initiative training helped me better understand satellite systems including their data acquisition, storing and rendering capabilities. At the end of the training I could download a huge volume of satellite imagery which helped not only my research, but also that of many researchers in my region."

Sandeep Kumar Patakamuri,
Anna University, India

“Almost ten years later, the connections developed during the START project are still strong. The MaghLag project created a wonderful dynamic environment for collaboration, which benefited to both students and senior researchers. For example, in my case, the connections with the French Research Institute for Development (Institut de recherche pour le développement – IRD) developed through MaghLag, evolved into a stronger collaboration and probably contributed to my election as President of the IRD’s Scientific Council.”

- Maria Snoussi, University Mohammed V-Agdal in Rabat, Morocco

HIGHLIGHTS FROM A SELECTION OF COMPLETED PROGRAMS

Adaptation at Scale in Semi-Arid Regions (ASSAR)

Understanding and promoting climate change adaptation in semi-arid regions.



“It has been quite a paradigm shift for me to engage with people to make my research relevant to them, and to ensure that my research output has an immediate uptake by those who can make decisions and change their livelihoods. From where I am now, I can’t see how else one should be doing research.”

Hillary Masundire, University of Botswana

Pan-Asia Risk Reduction (PARR) Fellowship Program

Building leadership for disaster risk reduction in Asia-Pacific.



“The PARR fellowship experience enhanced my skills and strengthened my capacity to be an outstanding scientist, especially in bridging science into practice and building safer and resilient communities.”

Rina Suryani Oktari, Syiah Kuala University, Indonesia

African Climate Change Fellowship Program (ACCFP)

Developing leadership for climate change science in Africa.



“I still connect with the networks developed during the ACCFP program: we work together on projects and share opportunities. For example, I am about to collaborate with former ACCFP fellows on projects in Zimbabwe and Malawi. The fellowship and other opportunities provided by START have helped me to grow professionally and develop networks – this is START.”

Annie Mapulanga, Ministry of Natural Resources, Energy and Mining, Malawi

- 
- START Staff
 - Regional Affiliates
 - Regional Centers

Let's work together to strengthen and inspire science that advances solutions to critical sustainability challenges.

Contact us at start@start.org.
We look forward to connecting with you.



www.start.org



[startinternational](https://www.facebook.com/startinternational)



[start_intl](https://twitter.com/start_intl)



[start-international-inc](https://www.linkedin.com/company/start-international-inc)



start@start.org